

FASHION SENSE

BY MIKE SHENK, ROBERT LEIGHTON
AND AMY GOLDSTEIN

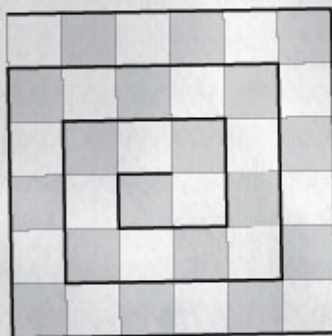
With Fashion Week here, it's time to introduce a new collection of puzzles. Start by solving the first six puzzles, each of which will give you a five- or six-letter answer word. Then follow the instructions for the final puzzle, "Complete Ensemble," to get the answer to this question:

Why are fashion houses
so concerned
about hem lengths?

(Answers will be published tomorrow)

Fine Weave

Time to separate the lights from the darks. Enter the answers to each set of clues one after the other in the grid, one letter per box, starting at the upper left and spiraling in toward the center. Answers to the Weave clues will fill all the boxes, while Light and Dark answers will fill only the light or the dark boxes. When you've completed the grid, your six-letter answer word will read diagonally from one of the grid's corners to another.



WEAVE

- 1 Tailor's measurement
- 2 Collar stiffener
- 3 Vacant, as an apartment
- 4 Thin, fragile-looking ones, as epitomized by Kate Moss
- 5 Subsequently
- 6 Pink shade
- 7 Kind of police bulletin (hyph.)

LIGHT

- 1 Quick with quips
- 2 Somewhat modern
- 3 Coward who was knighted
- 4 Peach center

DARK

- 1 Battery's partner
- 2 Label on a diet ad photo
- 3 Stylists' spots

Dress Code

The names of 11 articles of clothing have been put into a substitution code in which every instance of a letter has been replaced consistently in the list by the same new letter. First solve the code to determine the names of the clothing items. When you're done, 21 different letters will appear in the answers; delete those answer letters from the alphabet below, leaving the five unused letters. Then go back to the original code to decipher those five letters, which will spell the puzzle's answer word when read in order.

Z F T J J - R Y J S J I M Y Z S Q R T Y R Q W Z I
 R C C L A J I V Y T Z X J T G M L Q I F C T Z I
 V Y G C W C X A M J K J Q W I
 I Z T Y W B X Y V Y W Y I E J Q Z J T H J I Z
 J H J W Y W B B C E W F Q E Q Y Y Q W I F Y T Z
 X C G X J T K Q S V J Z

 A B C D E F G H I J K L M N O P Q R S T U V W X Y Z

Designer Knockoffs

Subtract a letter from the name of each item pictured here and rearrange the item's remaining letters to get the last name of one of the five designers whose first names are given. When all five pairs have been matched, the "knocked off" letters, taken in the order of the listed designers, will spell your five-letter answer word.

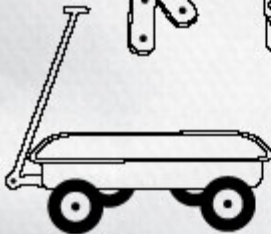
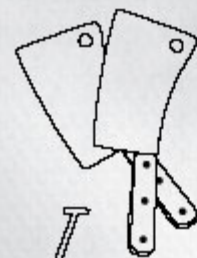
CALVIN _____

GIANNI _____

VERA _____

GIORGIO _____

ZAC _____



4 Designers get
who grab the
runaway sho

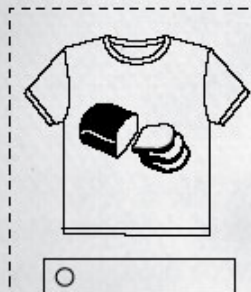
5 Never refuse
exposes you
rather not be

6 Keep pace w
them take al
outfits propo

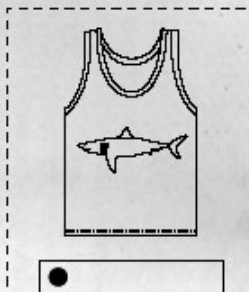
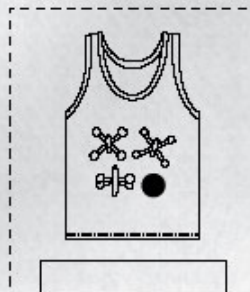
The New Season

The goal of this puzzle is to figure out a five-letter answer word using deductive reasoning. First identify the pictures on the shirts, each of which is a five-letter word that contains no repeated letters. The box beneath each picture tells you how many letters in that word also appear somewhere in the answer word and whether those letters share any of the same positions in the answer word. (Note the key below.) For example, the first Summer picture has no letters in common with the answer, while the second Summer picture has one matching letter, which is in the correct position. Compare shared letters to determine all the letters and their positions in the final five-letter answer word (which also has no repeated letters).

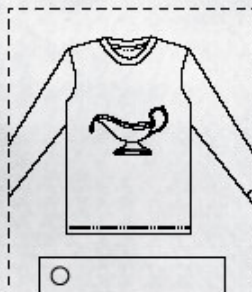
SPRING



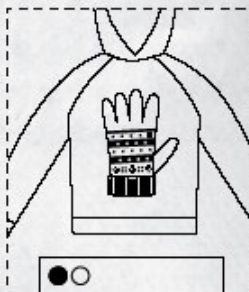
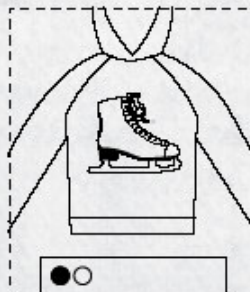
SUMMER



FALL



WINTER



- - Matching letter in the correct position
- - Matching letter in the wrong position

Dressing Down

Below is a list of important "dos" for fashion

Dressing Down

Below is a list of important "dos" for fashion models to keep in mind. However, in each sentence, one letter has accidentally moved "down" — that is, it has moved from one word into another word later in the same sentence.

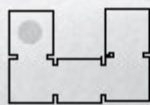
Use context to determine the misplaced letter in each sentence. All the misplaced letters, taken in the order of the sentences, will spell your six-letter answer word.

IMPORTANT!

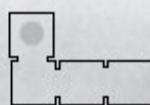
- 1 Get into a stale relationship so you're not photographed emerging from a limbo with someone new every night.
- 2 When modeling lather, avoid sudden emotions that may cause embarrassing sounds.
- 3 Remember to send tanks if a helpful makeup and wardrobe crew shaves your butt on a difficult assignment.
- 4 Designers get cute headaches from models who grab the spotlight for themselves during runaway shows.
- 5 Never refuse to wear an outfit that exposes your cures just because you'd rather not be seven in it.
- 6 Keep pace with finicky designers by letting them take all the time they need to seize your outfits properly.

Needle Points

When completely filled in, each line in the grid will spell the name of a fabric or material. First put the answer to each clue into its numbered jigsaw piece, starting in the shaded space. Then fit the pieces into the grid, matching the shaded spaces in the pieces to the shaded spaces in the grid. None of the pieces will be rotated, and none will overlap. (When you determine where a piece belongs, you may find it useful to mark its outline.) Once all the pieces are properly assembled, six spaces will remain unfilled. Fill in those spaces to complete the names of the fabrics and materials. Rearrange the letters in these spaces to spell your six-letter answer word.



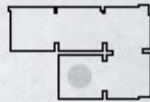
*Visitor to
the Hatter's
tea party*



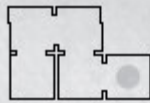
*Man whose
wardrobe was
a fig leaf*



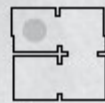
*Play's
performers*



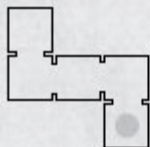
*Go around
the rink*



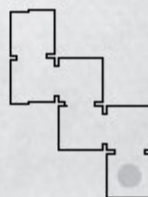
Gin mixer



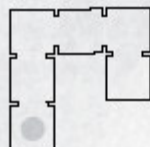
*Short jazz
phrase*



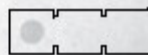
Nut with a cap



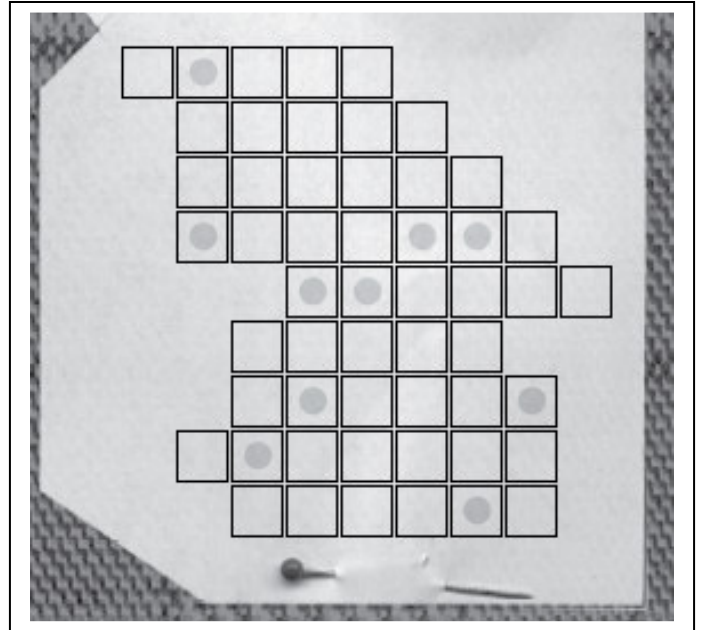
*Fixed with
a needle and
yarn*



Hayfield job



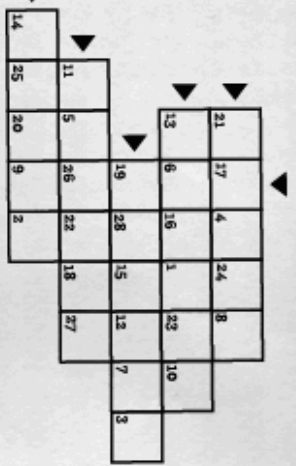
Miniature



Complete Ensemble

Once you've solved all the puzzles, fit your six answer words into the first grid so that five of the words read across (beginning at the pointers on the left) and one word reads down (beginning at the pointer on top of the grid). Then transfer all the letters into the second grid according to the numbers in the boxes. When you're done, those letters, read in order, will spell out the answer to this question:

Why are fashion houses so concerned about hem lengths?



1	2	3	4	5	6	7
8	9	10	11	12	13	14
15	16	17	18	19	20	21
22	23	24	25	26	27	28

Mike Shenk, Robert Leighton and Amy Goldstein are partners in Puzzability, which creates puzzles for print and interactive media. Designed and illustrated by Holly Greer.